



2025 annual report to the Community

Oakbank School

Oakbank School number: 0762

Partnership: Heysen



School principal:

Lee Knight



Government
of South Australia
Department for Education

Date of endorsement:

27/01/2026

Context Statement

Oakbank School caters for students from R-12. At the time of this report, the enrolment in 2025 is 337. Oakbank School is classified as Category 5 on the Department for Education Index of Educational Disadvantage. At the time of this report, the school population includes 3% Aboriginal students, 45% students with disabilities, 2% students with English as an additional language or dialect (EALD) funded background, 1% children/young people in care. Further information about the school is available on the school's website (including its context statement), as well as the My School website.

Data Source: Department for Education data holdings from Mid census captured in AUGUST 2025.

Governing Council Report

As a Governing Council we have worked in partnership with school leadership to set strategic directions, uphold high standards, and ensure the best possible outcomes for our students.

We have been committed to supporting initiatives that enhance teaching and learning, ensuring responsible management of school resources and fostering a safe, respectful, and welcoming school environment

As a focus on a few of the many achievements and activities that have been realized at the school this year through working together, The Cyber Technology Suite jointly funded by the Department and the school, which is a fabulous teaching resource embracing the wider school communities in the Adelaide Hills and offering a VET course for students.

The continued planning to utilize the \$15.9 million grant to expand and renovate infrastructure of the school, which we look forward seeing evolve in 2026

The Commencement of Fundraising Committee, commencing with a Democracy Sausage Sizzle on election Day

Continued dedication of the local church communities providing Pancake Breakfast every Friday

Oakbank School had a very successful agricultural representation at the Royal Adelaide Show once again as well as a proud presence at several other community events

Special mention to a Band Night a tremendous night of music, encouraging our students with musical talent, creating a vision as to what we might be able to achieve introducing music to our curriculum.

The School continues to strengthen its position financially meeting all parameters and through excellent work of the entire

Management team sees us in a very healthy position. Thank you, Louise Spencer and our financial management team, an amazing job done in 2025.

To Principal Lee Knight, Vice Principal Heath Perrot, the leadership team, our entire teaching staff – our support staff and their leaders - an unending and infinite thank you for all the work, time, and care you evoke every day within the school. It is a privilege to have you as our management team

To Governing Council and Finance Advisory Committee members, thank you, your time, commitment, discussion and input are very much appreciated and a vital part of the school function

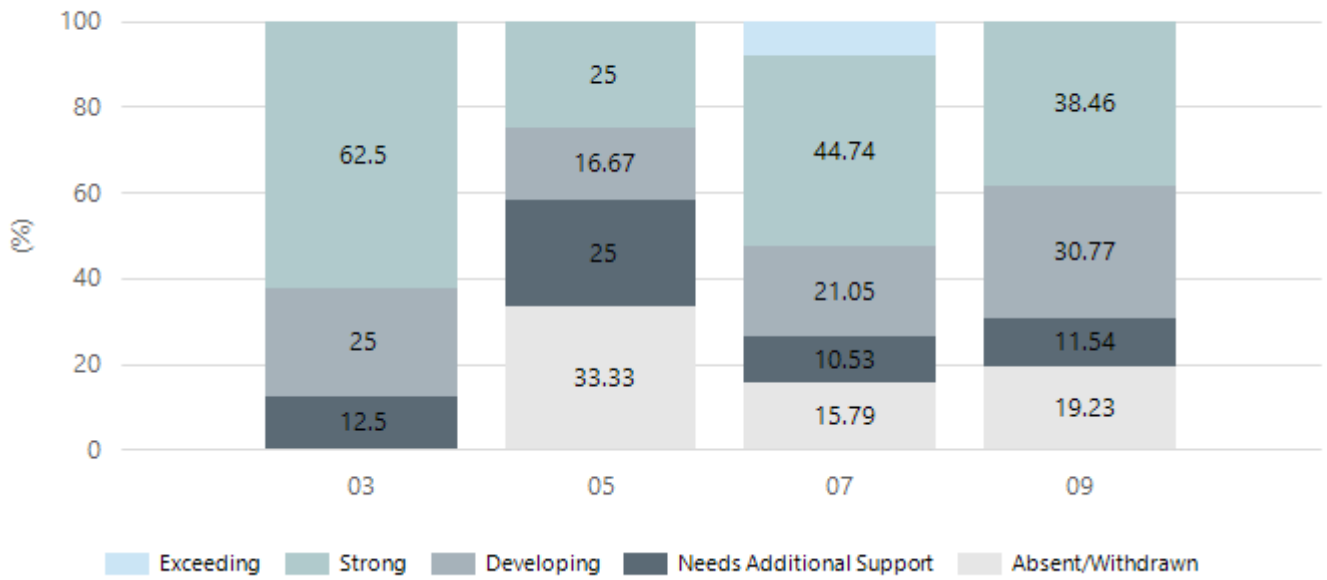
We look forward to continuance of the success we have experienced in 2026 and future years.

Performance Summary

NAPLAN Proficiency

In 2023 the Australian Curriculum, Assessment and Reporting Authority (ACARA) - a Commonwealth Independent statutory authority - announced changes to NAPLAN performance reporting. The new approach replaces the previous numerical NAPLAN bands and the national minimum standard.

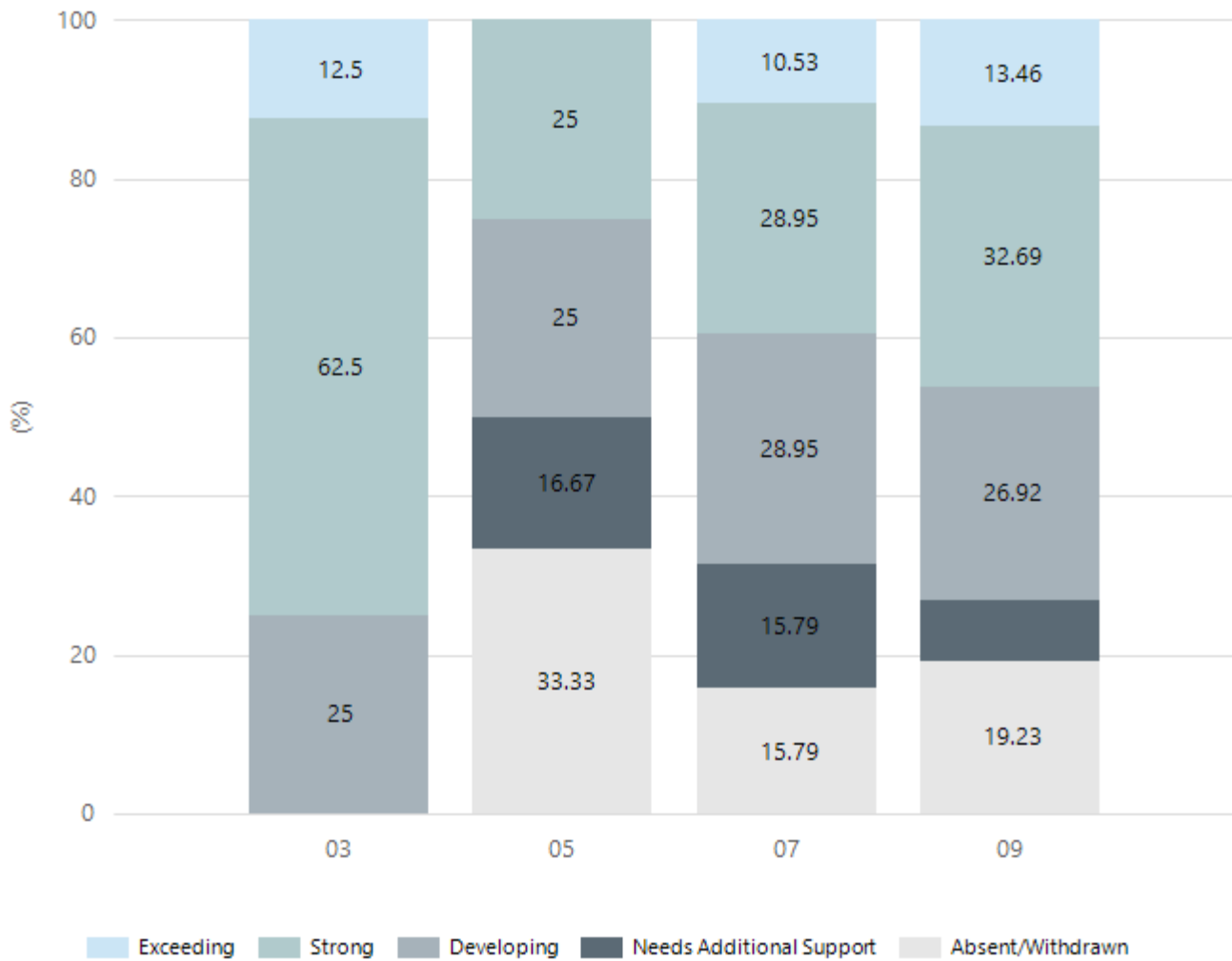
Numeracy



Year Level	03	05	07	09
Exceeding			3	
Strong	5	3	17	20
Developing	2	2	8	16
Needs Additional Support	1	3	4	6
Absent/Withdrawn		4	6	10
Total	8	12	38	52

Data Source: Department for Education Assessment Data Holdings, 2025. If there are less than 6 students who sat NAPLAN in a school, no information will be shown. If a year level has less than 6 students, that year level will not be shown in NAPLAN results.

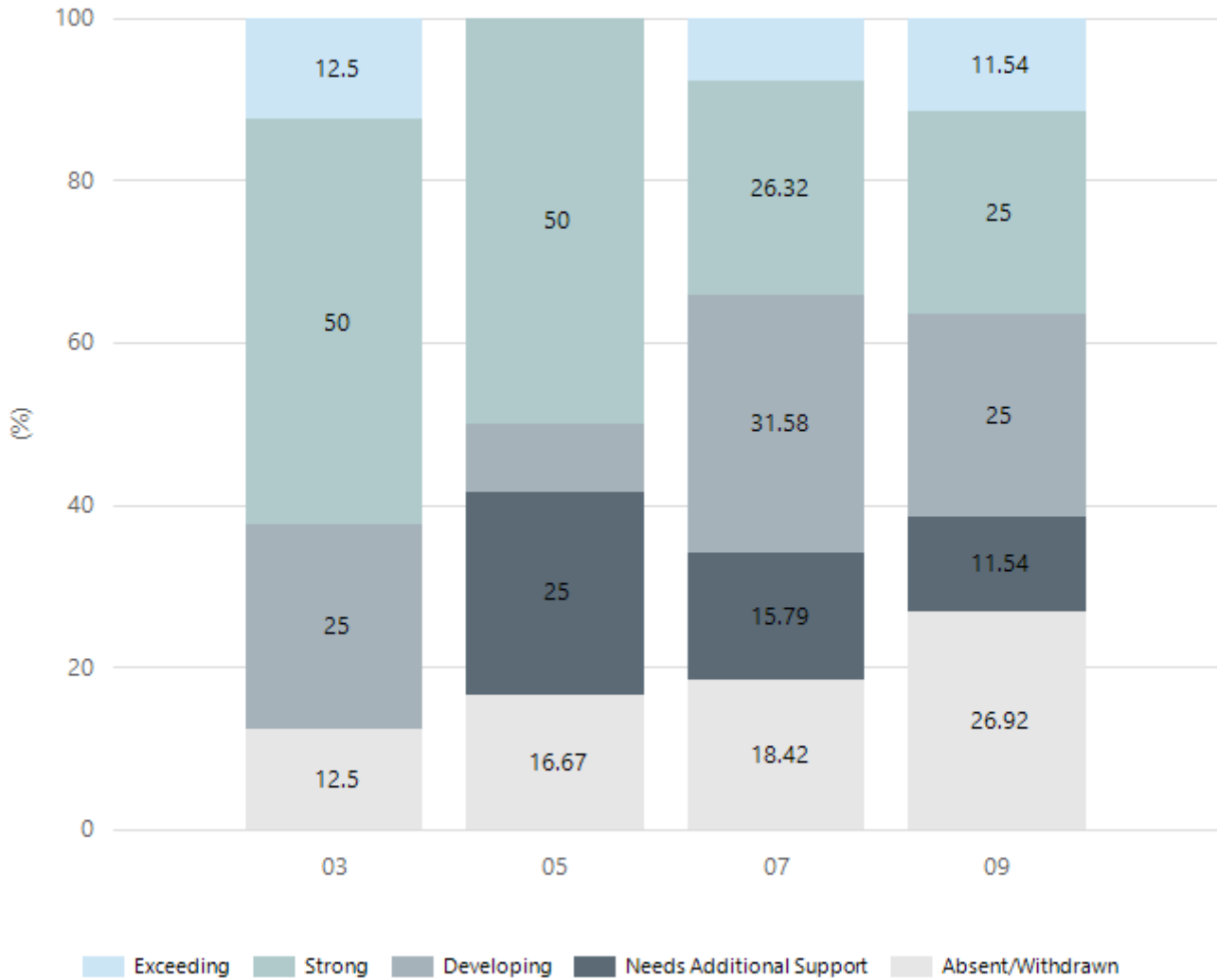
Reading



Year Level	03	05	07	09
Exceeding	1		4	7
Strong	5	3	11	17
Developing	2	3	11	14
Needs Additional Support		2	6	4
Absent/Withdrawn		4	6	10
Total	8	12	38	52

Data Source: Department for Education Assessment Data Holdings, 2025. If there are less than 6 students who sat NAPLAN in a school, no information will be shown. If a year level has less than 6 students, that year level will not be shown in NAPLAN results.

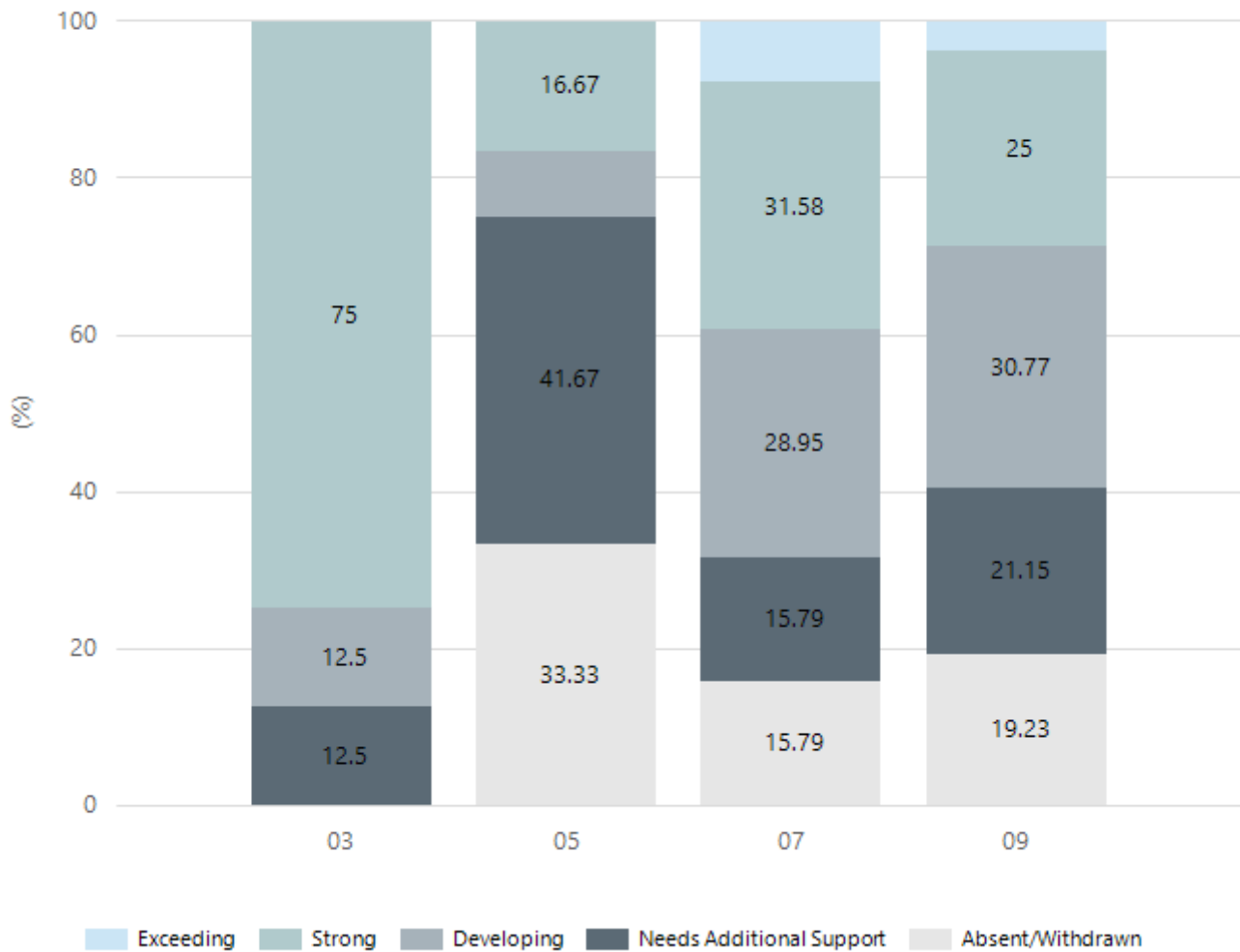
Writing



Year Level	03	05	07	09
Exceeding	1		3	6
Strong	4	6	10	13
Developing	2	1	12	13
Needs Additional Support		3	6	6
Absent/Withdrawn	1	2	7	14
Total	8	12	38	52

Data Source: Department for Education Assessment Data Holdings, 2025. If there are less than 6 students who sat NAPLAN in a school, no information will be shown. If a year level has less than 6 students, that year level will not be shown in NAPLAN results.

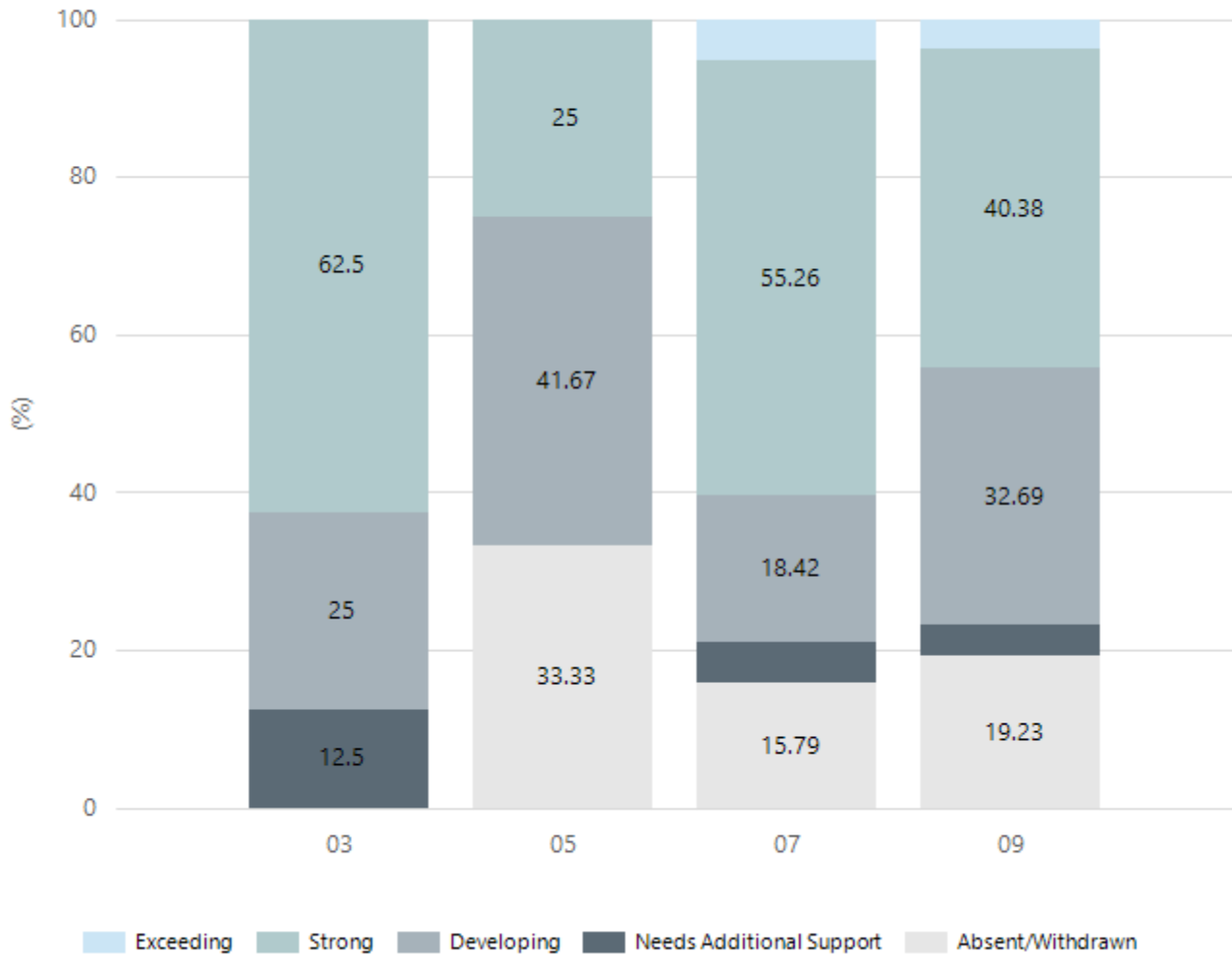
Grammar



Year Level	03	05	07	09
Exceeding			3	2
Strong	6	2	12	13
Developing	1	1	11	16
Needs Additional Support	1	5	6	11
Absent/Withdrawn		4	6	10
Total	8	12	38	52

Data Source: Department for Education Assessment Data Holdings, 2025. If there are less than 6 students who sat NAPLAN in a school, no information will be shown. If a year level has less than 6 students, that year level will not be shown in NAPLAN results.

Spelling



Year Level	03	05	07	09
Exceeding			2	2
Strong	5	3	21	21
Developing	2	5	7	17
Needs Additional Support	1		2	2
Absent/Withdrawn		4	6	10
Total	8	12	38	52

Data Source: Department for Education Assessment Data Holdings, 2025. If there are less than 6 students who sat NAPLAN in a school, no information will be shown. If a year level has less than 6 students, that year level will not be shown in NAPLAN results.

South Australian Certificate of Education - SACE

SACE Stage 2 Grades - Percentage of grades that are C- or above for attempted SACE subjects

2022	2023	2024	2025
100%	95%	95%	99%

Data Source: SACE School Data Reports, as of February 2025 for 2022-2025. When there are less than six students, no data is supplied. Due to rounding of percentages, total results may not add up to 100%.

SACE Stage 2 Grade Distribution

Grade	2022	2023	2024	2025
A+		1%	2%	
A	5%	12%	5%	7%
A-	9%	7%	13%	15%
B+	23%	15%	10%	9%
B	12%	8%	15%	20%
B-	17%	15%	13%	11%
C+	14%	13%	16%	19%
C	17%	19%	12%	10%
C-	3%	5%	10%	9%
D+		1%	2%	1%
D		1%	3%	
D-		2%		

Data Source: SACE School Data Reports, as of February 2025 for 2022-2025. When there are less than six students, no data is supplied. Due to rounding of percentages, total results may not add up to 100%.

SACE Completion - Percentage of completers out of those students who had the potential to complete their SACE in October that year

2022	2023	2024	2025
94%	89%	91%	100%

Data Source: SACE School Data Reports, as of February 2025 for 2022-2025. When there are less than six students, no data is supplied. Due to rounding of percentages, total results may not add up to 100%.

Year 12 Students undertaking Vocational or Trade Training (VET)

	2023	2024	2025
Percentage of Year 12 students undertaking Vocational Training or Trade Training	41%	67%	42%
Percentage of Year 12 students attaining a Year 12 certificate or equivalent VET qualification	89%	91%	100%

Data Source: School supplied data

School Attendance

Year Level	2023	2024	2025
Reception	83.2%	83.9%	88%
Year 01	92.0%	91.2%	85%
Year 02	92.2%	88.9%	93%
Year 03	82.0%	88.3%	85%
Year 04	80.6%	81.7%	92%
Year 05	86.9%	87.5%	88%
Year 06	85.3%	86.5%	91%
Year 07	84.8%	89.4%	86%
Year 08	84.0%	85.1%	86%
Year 09	82.1%	85.1%	81%
Year 10	80.5%	79.3%	83%
Year 11	77.7%	81.5%	77%
Year 12	85.6%	86.2%	87%
Secondary Other		100.0%	
Total	82.9%	85.1%	84%

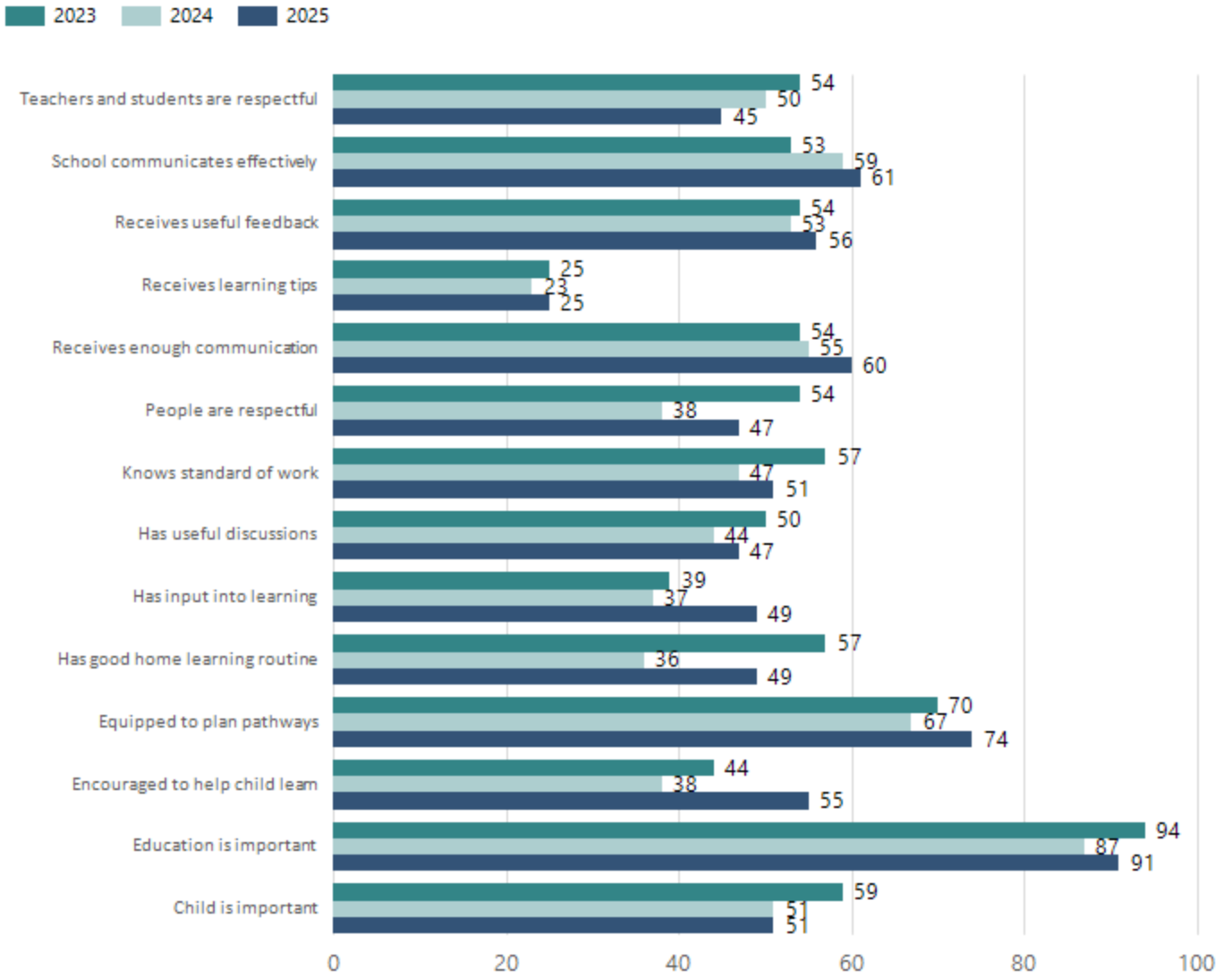
Data Source: Department for Education Attendance Data, Semester 1 Report 2025. A blank cell indicates there were no students enrolled. 'Primary Other' includes students enrolled in specialised education options. 'Secondary Other' includes students who have already spent a year at Year 12 and elected to undertake further study at Year 12.

Attendance Comment

In South Australia, all children and young people must be in school from 6 years to 16 years old. They must attend a government or non-government school full time. From age 16 to 17 however, young people must attend school or an approved learning program (such as an apprenticeship, traineeship, accredited course or university). Schools and parents must encourage and support students to come to school every day. Parents and caregivers must make sure their child is enrolled in a school, and attends school all day and everyday it is open, unless a child is sick or has an approved exemption. Teachers and leaders actively follow up when a student misses school, including recording all absences and non-attendance. All schools in South Australia have local attendance procedures governed under the Education and Children's Services Regulations 2020.

School Parent Opinion Survey Results

Proportion of agree/strongly agree response(%)



Data Source: 2025 Department for Education Parent Opinions Survey, Term 3 2025.

Intended Destination

Leave Reason	Number	%
IS - INTERSTATE	6	17.0%
NG - ATTENDING NON-GOV SCHOOL IN SA	2	6.0%
OV - LEFT SA FOR OVERSEAS	2	6.0%
TG - TRANSFERRED TO SA GOVERNMENT SCHOOL	20	56.0%
U - UNKNOWN	6	17.0%

Data Source: Department for Education Destination Data Report, 2025. Data extract term 3 2025. Data shows recorded destinations for students that left the school in the previous year. Data is uploaded by schools in term 3 and may not reflect final or total figures at time of report creation.

Highest Qualifications held by the teaching workforce and workforce composition

All teachers at this school are qualified and registered with the SA Teachers Registration Board.

Qualification Level	Number of Qualifications
Bachelor's degrees or Diplomas	18
Postgraduate Qualifications	18

Data Source: Data extracted from Mandatory Workforce Information Collections as on the last pay date of June 2025. As self-reported by staff in the system.

Please note: Data includes staff who are Actively employed and on extended paid leave. Please note only the highest qualification of the Teaching staff is reported. Excludes any number of other certifications earned.

Workforce composition including indigenous staff

	Teaching Staff		Non-Teaching Staff	
	Indigenous	Non-Indigenous	Indigenous	Non-Indigenous
Full-Time Equivalents	0.0	32.1	0.0	16.1
Persons	0.0	36.0	0.0	23.0

Data Source: Data extracted from Mandatory Workforce Information Collection as on the last pay date of June 2025.

Please note: Data includes staff who are actively employed and on extended paid leave. "Indigenous category" is self-reported by staff in the system.

Financial Statement

Funding Source	Amount
Grants: State	\$0
Grants: Commonwealth	\$3,478.91
Parent Contributions	\$124,194.81
Fund Raising	\$4,802.85
Other	\$13,553.10 (Facilities Hire) \$212.65 (Commissions)

Data Source: School supplied data.